

## INSTALLATION INSTRUCTIONS & OWNERS MANUAL

**INSTALLER – READ ENTIRE INSTRUCTION SHEET BEFORE PROCEEDING TO INSTALL.**

**POOL OWNER – PLEASE KEEP THESE INSTRUCTIONS FOR FUTURE REFERENCE.**

**PLEASE NOTE**  
**THESE INSTALLATION INSTRUCTIONS APPLY TO AQUA-QUIP QC SURFACE MOUNTED LED LIGHTS FOR CONCRETE POOLS ONLY.**

### IMPORTANT INFORMATION TO INSTALLER/ELECTRICIAN

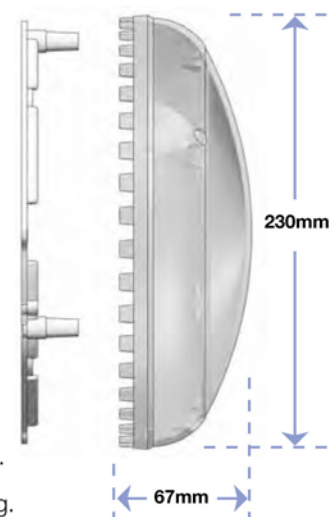
- All QC Series LED Lights operate from a VARIABLE SUPPLY VOLTAGE from 12volt AC through to 32volt AC.
- For new pool construction, a 12volt AC transformer must be installed in accordance with AS/NZS 3000:2007, as amended. *“Each underwater luminaire must be supplied from an individual source. An individual source may be an individual isolation transformer or an individual winding on an isolation transformer that has a number of secondary windings”.* Aqua-Quip’s transformers allow multiple QC Series LED Lights to be connected, see below.

Order Code	Description	Transformer suitable for:
APL 502	Hardwired 12v 100VA Transformer with two secondary outputs @ 50VA each	The APL 502 will run up to two QC Series LED lights.
APL 512	Plug-In 12v 100VA Transformer with two secondary outputs @ 50VA each	The APL 512 will run up to two QC Series LED lights.
APL 504	Hardwired 12v 200VA Transformer with four secondary outputs @ 50VA each	The APL 504 will run up to four QC Series LED lights.
APL 514	Plug-In 12v 200VA Transformer with four secondary outputs @ 50VA each	The APL 514 will run up to four QC Series LED lights.

### TECHNICAL SPECIFICATIONS AQUA-QUIP QC SURFACE MOUNTED LED POOL LIGHTS

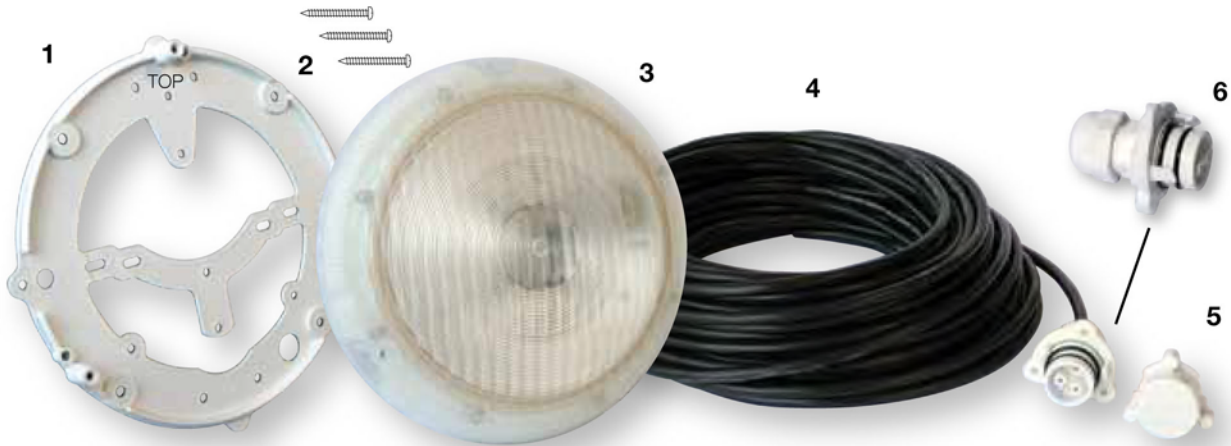
Power Requirement for Fixed Colour and Multi-Colour LEDs:	12V ~ 32V AC 50/60Hz.
Pool Light Protection Rating:	IPX8 to 2.0m depth.
Temperature Range:	-10°C ~ +40°C pool water temperature.
Installation Location:	200mm ~ 400mm below water level.
Power Consumption (Fixed Colour LEDs):	Maximum 16VA at all voltages 12V ~ 32V.
Power Consumption (Multi-Colour LEDs):	Maximum 22VA at all voltages 12V ~ 32V.
Rated Lamp Life:	>50,000 hours.
Voltage Tolerance (Fixed Colour and Multi-Colour LEDs):	10.5V AC ~ 35V AC.
Light Colour:	White = >5000K, Blue = 475nm, Green = 525nm.
Light Output (Typical):	White = 1050 Lumens, Blue = 300 Lumens, Green = 650 Lumens.
Fault Protection:	Power Cycle “Run Dry” thermal cut-out. Voltage transient clamping.

QC Surface Mounted Pool Light Dimensions



# QC SERIES SURFACE MOUNTED LED LIGHTS for CONCRETE POOLS

## INCLUDED WITH THE QC SERIES LED POOL LIGHT FOR CONCRETE POOLS:

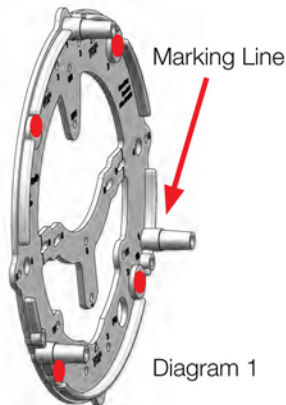


Item	Description	Item	Description
1	Universal Mounting Bracket	4	Cable, assembled with Quick Connect Plug
2	Mounting Screws x 3	5	Cable Cap
3	LED Light Only	6	Quick Connect Plug

Additional parts diagram is shown on Page 3.

## INSTALLATION INSTRUCTIONS

- 1) A rigid PVC conduit (min. 20mm diameter) should be run from the pool wall back to the plant room, where the transformer will be located. The conduit should be installed as to prevent water siphoning from the pool. The location of the pool light should be in such a position to allow enough cable to be wound up at the rear of the light to enable it to be floated to the pool deck. A location should also be chosen that minimises any shadowing from the light beam.
- 2) The Universal Mounting Bracket can be rendered to the pool wall or screwed directly on top of the pool interior, either way ensure the bracket is oriented correctly. The word "TOP" is moulded into the bracket.

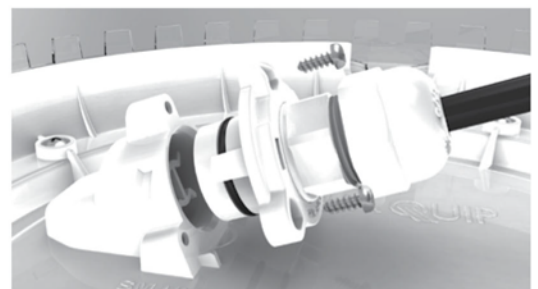


**When pebblecreting, plastering or rendering:** Cover the circular frame of the Mounting Bracket with the finished pool surface up to the marking line on the three mounting posts. After the pool surface has been applied, only the 3 mounting posts will be visible.

**When screwing directly onto pool wall:** Drill 4 holes in pool wall, aligning with the four screw hole provisions marked in RED in Diagram 1. Use the APL071 Retro-Fit Screw Kit (see page 3, item 7) available for purchase as an optional extra.

**Note:** Trim Back the three mounting posts by 5mm, which will then enable the rear of the clear lens to sit against the interior pool surface.

- 3) The Cable can be fed through at a convenient time throughout the construction, it is factory-fitted with a protective Cable Cap to protect the electrical connector and O-rings from moisture, dust and grit. As mentioned above, ensure enough cable is left for future servicing.
- 4) When the pool is ready to be filled, then the Quick Connect Plug Kit is now ready to be inserted into the receptacle on the rear of the QC Series Led Pool Light. Unscrew and save the three screws that are securing the Cable Cap to the Cable Bracket. Remove the Cable Cap by disengaging the two clips on the Cable Bracket. The two O-rings are factory-lubricated, ensure they are free from dust and grit. Align the Quick Connect Plug Kit with the exposed metal pins in the receptacle on the rear of the QC Series LED Pool Light and push into place. Push the Cable Bracket towards the light until the clips engage into place. Use a #1 Phillips screwdriver and three screws (saved from above) and secure the Cable Bracket into the three screw holes. Do not overtighten. See Diagram 2.
- 5) Wind up excess cable around the hooks on the rear of the QC Series LED Pool Light. Use the three PE6 screws provided to mount the QC Series LED Pool Light onto the three posts on the Universal Mounting Bracket.

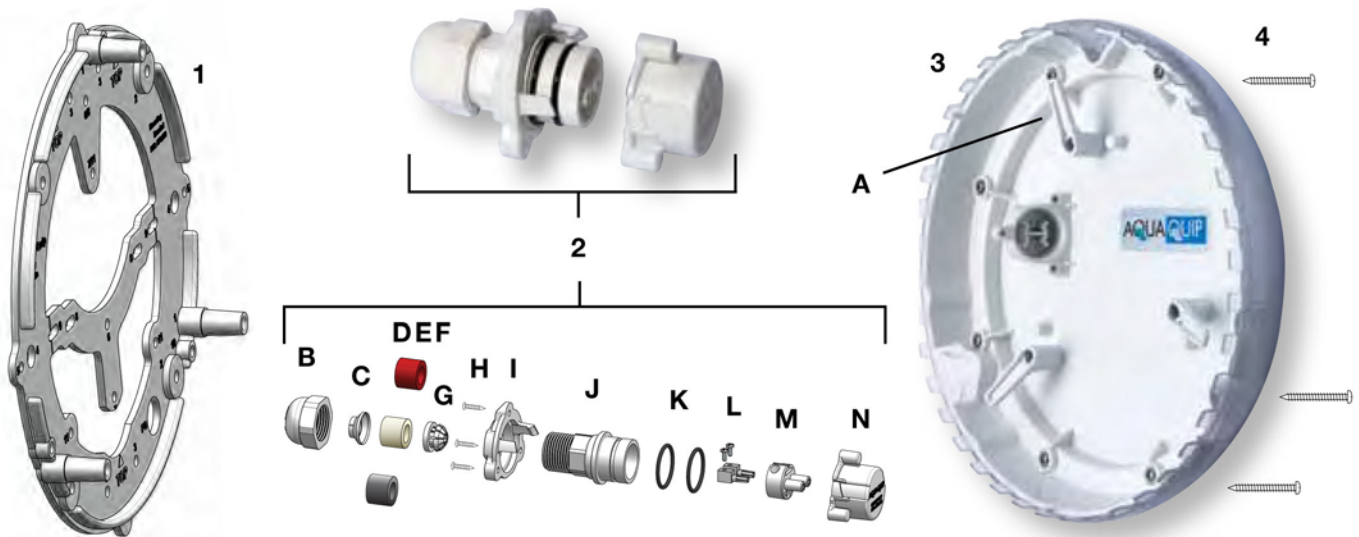


# QC SERIES SURFACE MOUNTED LED LIGHTS for CONCRETE POOLS

## IMPORTANT INFORMATION FOR INSTALLER AND POOL OWNER

- Pool light must be fully submerged before switching on. If the light overheats due to operation out of water, the inbuilt “run dry” thermal cut-out will engage and the LEDs will operate at a greatly reduced intensity until power is shut down for 5 minutes and turned back on.
- Always allow sufficient cable length behind the pool light to enable future servicing.
- Only use stainless steel screws provided, using inferior quality screws voids the warranty.
- Internal components are not user-serviceable. Return to place of purchase for service.
- Never stare directly at LED lights, prolonged direct exposure can cause eye damage.
- Only use the stainless steel screws provided with the QC Series LED Pool Light, the use of incorrect screws voids the warranty.
- Keep the protective Cable Cap for possible future use.
- Please make careful note of where the pool builder or electrician locates the transformer(s) and junction box(es). This information is necessary if future servicing is required.

## QC SERIES LIGHT PARTS DIAGRAM



### QC SERIES LED LIGHT PARTS LIST

A	APL 802 Cable Hook	H	APL 806 Screw Kit for Cable Bracket
B	ASN 366 Cable Nut	I	APL 804 Cable Bracket
C	ASN 367 Washer	J	ASN 363 Connector Housing
D	ASN 370 Red Seal (suits .75mm <sup>2</sup> - 1mm <sup>2</sup> Cable)	K	ASN 380 O-ring Kit
E	ASN 371 White Seal (suits 1.5mm <sup>2</sup> Cable)	L	ASN 611 Female Pin Kit
F	ASN 372 Black Seal (suits 2.5mm <sup>2</sup> - 4mm <sup>2</sup> Cable)	M	ASN 362 Female Plug
G	ASN 365 Cable Clamp	N	APL 803 Cable Cap

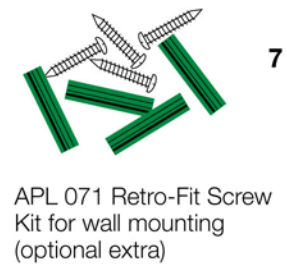


Diagram 3 shows the Quick Connect Plug Kit at the end of the cable now attached to the rear of the QC Series LED Pool Light. Excess cable wraps around the three hooks located on the rear of the pool light.

The Light is factory-sealed and assembled with a clear lens with proprietary diffusion material, ensuring the vivid colours of the LEDs (contained within) are projected and evenly dispersed throughout the pool.

Diagram 3

## FEATURES

### Energy Efficient

**QC Series LEDs** are energy efficient drawing only 15% of the power requirement of older style halogen lights. Thanks to the integrated heat sink QC Series LEDs also run well below their thermal rating increasing their life to beyond 50,000 hours.

### Variable Voltage Technology

Each QC Series Light is able to be operated from a supply voltage ranging from 12 Volt AC through to 32 Volt AC. For retro-fitting – the **existing transformer** will not have to be replaced, saving money.

### Amazing LED Colours

Choose from fixed colours of white, blue or green for maximum illumination; or the **Multi Colour option** which incorporates the advanced Spectrum IX technology. The **QC Series Multi Colour** lights allow the user to select from a variety of pre-programmed scroll and flash modes as well as being able to choose from over 100 different “hold” colours.

### New Style Back Plate

**Newly designed back plate** creates more space behind the light for extra cable to be secured. The raised flange on the back plate also provides for **improved aesthetics**.

### Quick Connect Feature

When installing into an existing pool the **Quick Connect Plug Kit** is the simplest and most convenient way to safely and reliably join the pool light to the existing cable. Cable seals of **varying sizes** are provided to ensure that the QC Series Light **quickly connects** up to cables of **varying thicknesses**. For pool builders, the Quick Connect feature complete with protective cap enables the pool light to be stored in a safe location and only needs to be connected to the cable when the pool is ready to be filled.

### Universal Mounting Bracket

The innovative bracket is used for both retro-fit applications and for new pools. To aid retro-fitting into existing concrete pools the universal mounting bracket **has a variety of screw provisions** to ensure compatibility with all brands of pool lights.

### Massive Illumination

When comparing the illumination of the QC Series Fixed Colour LED Lights against standard halogen models the QC Series LEDs are approximately **twice as bright**.

### Australian Made

For your peace of mind and like most products within Aqua-Quip's range the QC Series LED Surface Mounted Lights are **proudly made in Australia**.

*For decades Aqua-Quip have been innovators in swimming pool lighting systems. As new technologies emerge we seek out ways to involve them in our current range of products. The QC Series concept has evolved from a need for pool builders and technicians to most conveniently effect the wiring connection when installing either a new light in a new pool or retro-fitting in an existing pool.*

*With its protective cable cap in place, the wiring and connector are safe from the rigours of a construction site – simply unscrew the cap when the light is ready to be installed, connect and fasten with the screws provided.*

## AQUA-QUIP TRANSFORMERS

Aqua-Quip transformers are simple to install, are available in hard-wired or plug-in models and deliver a safe extra low voltage (E.L.V) 12 volt supply to operate the QC Series LED Pool Lights. The circuit capacity of the secondary outputs must not be exceeded.

Transformers comply with AS 6558.2.6, ensure they are located and installed in accordance with AS/NZS 3000:2007 (The Wiring Rules) as amended.

APL502 & APL512 runs up to 2 x QC Series LED Lights

APL504 & APL514 runs up to 4 x QC Series LED Lights



**Aqua-Quip cannot be responsible for QC LED Pool Light failures or improper QC LED Pool Light functioning when the light, cable or transformers have been installed incorrectly.**



### Rainbow Pool Products

PO Box 2388, Mansfield Qld 4122

Telephone STD 61-7-3849 5385

Facsimile STD 61-7-3849 5384

Email: [info@rainbowpoolproducts.com.au](mailto:info@rainbowpoolproducts.com.au)

Web: [www.rainbowpoolproducts.com.au](http://www.rainbowpoolproducts.com.au)